

SAUNA SANCTUARY AND SERENITY LOUNGE



Embrace tranquility and unwind in our opulent sauna area, designed to offer a sanctuary of serenity. Allow yourself to luxuriate and bask in the rejuvenating essence that permeates this space. Our meticulously curated sauna landscape not only promotes your overall well-being, but also fortifies your immune system, nurturing it to its utmost potential.

Afterwards, immerse yourself in the ethereal depths of the "valley's grandest plunge pool," Haldensee, for an invigorating cool-down, or simply revel in the blissful repose it offers. Within our serene haven, harmonious and intimate relaxation takes on a whole new definition, transforming into an extraordinary encounter. And should you still crave an extra touch of pampering or indulgence, our skilled therapists stand ready to bestow upon you an array of heavenly massages and other exquisite treats.

SAUNA SANCTUARY AND SERENITY LOUNGE (daily hours of operation from
11:00 a.m. – 09:30 p.m.)

INFRARED SAUNA 40°C



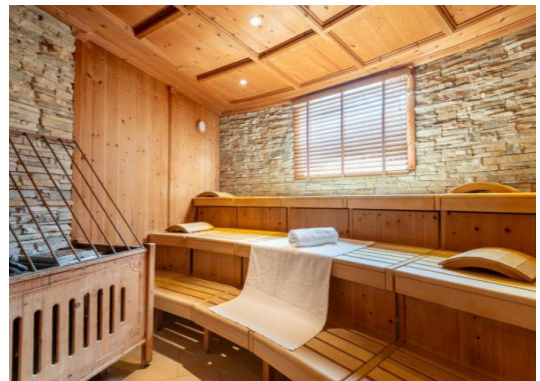
Experience the transformative power of our resplendent infrared sauna. Luxuriate in a serene temperature of 40°C, where chronic ailments such as backaches, joint discomfort, rheumatoid conditions, and muscular tensions find lasting solace.

Beyond the purported physical benefits, this sanctuary exudes a therapeutic synergy through the harmonious interplay of radiant light, encompassing warmth, and captivating hues, bestowing profound revitalization upon one's psyche, spirit, and soul.

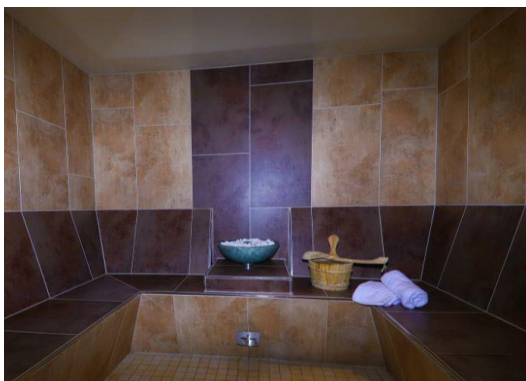
ORGANIC SAUNA 60°C

This particular sauna represents a refined alternative to the renowned Finnish sauna. With an indulgent temperature of 60°C, it offers a harmonious interplay between perspiration and cooling.

The bio - sauna is acclaimed for its exceptional ability to promote overall well-being and nurture the skin.



BRINE – STEAM BATH



The unique brine steam bath encompasses a myriad of virtues. The infusion of scorching steam, imbued with essential oils and dissolved salt, purifies the respiratory system, fosters dermal blood flow, revitalizes the entire being, and bestows upon one a sense of tranquility and serenity.

Elevating the steam bath indulgence is a salt exfoliation treatment, for one's personal enjoyment within the steam bath sanctuary.

TYROLEAN STUBENSAUNA 90°C

The Finnish sauna, in its Tyrolean rendition, represents the epitome of sauna sophistication. Within the traditional "wooden sanctuary," the immune system and defenses are fortified.

The Tyrolean Stubensauna embraces a defining characteristic of scorching heat, boasting a temperature of 90°C, along with a delicately low humidity level.



REJUVENATING RETREAT WITH WATERBEDS



In order to facilitate a serene respite following invigorating sauna sessions, the Via Salina has curated an exclusive sanctuary adorned with water beds.

Within this tranquil haven, guests are invited to truly unwind and grant their bodies the reprieve they rightfully deserve. Embark on

a sojourn at Hotel Via Salina without delay, and immerse yourself in the unequivocal bliss of complete relaxation.